

## Supporting Information

Figure I - Representative images of the 2DE gels obtained from the sarcoplasmic fraction of gilthead seabream muscle, showing the position and numeric identification of spots significantly affected by the dietary treatment (on the left, unmodified image; on the right, original image modified to increase contrast).

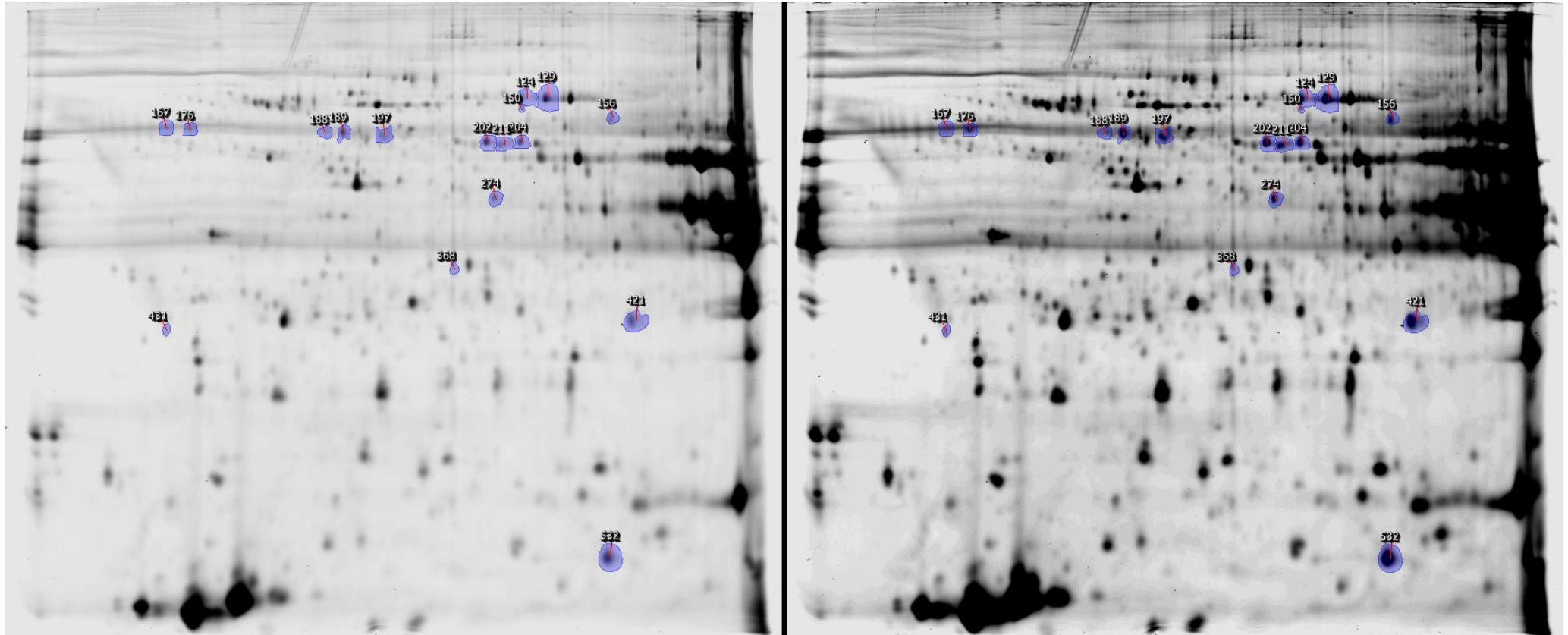


Figure II – Muscle TBARS content of gilthead seabream fed the control and glycerol supplemented diet. Values are means  $\pm$  standard deviation (n =8).

