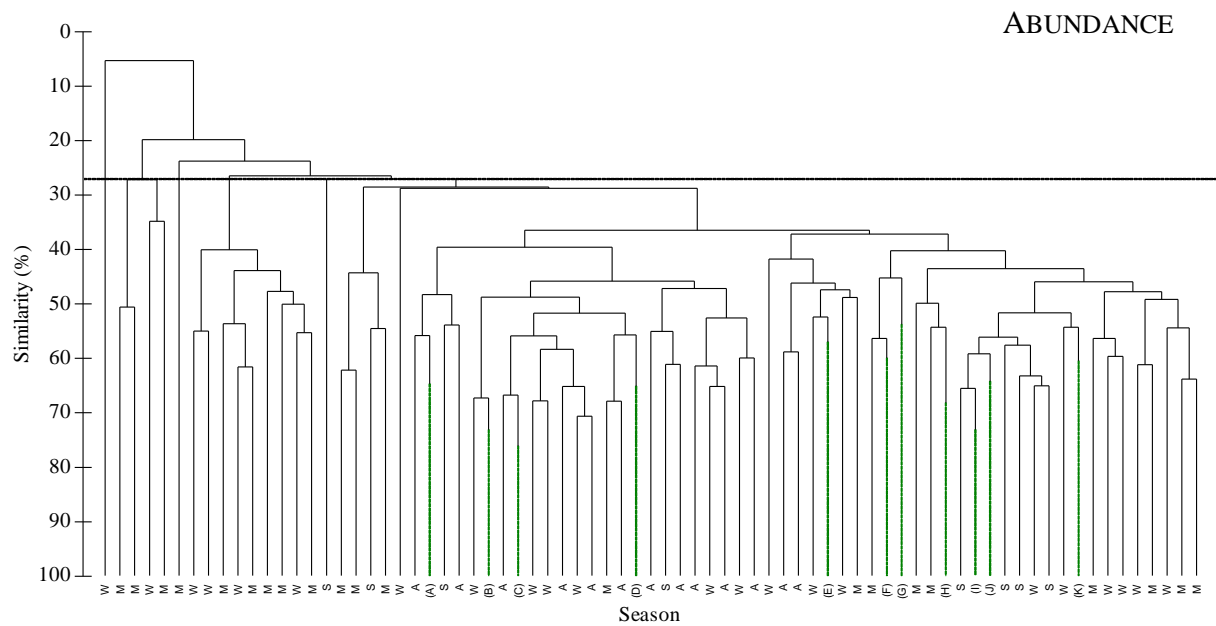


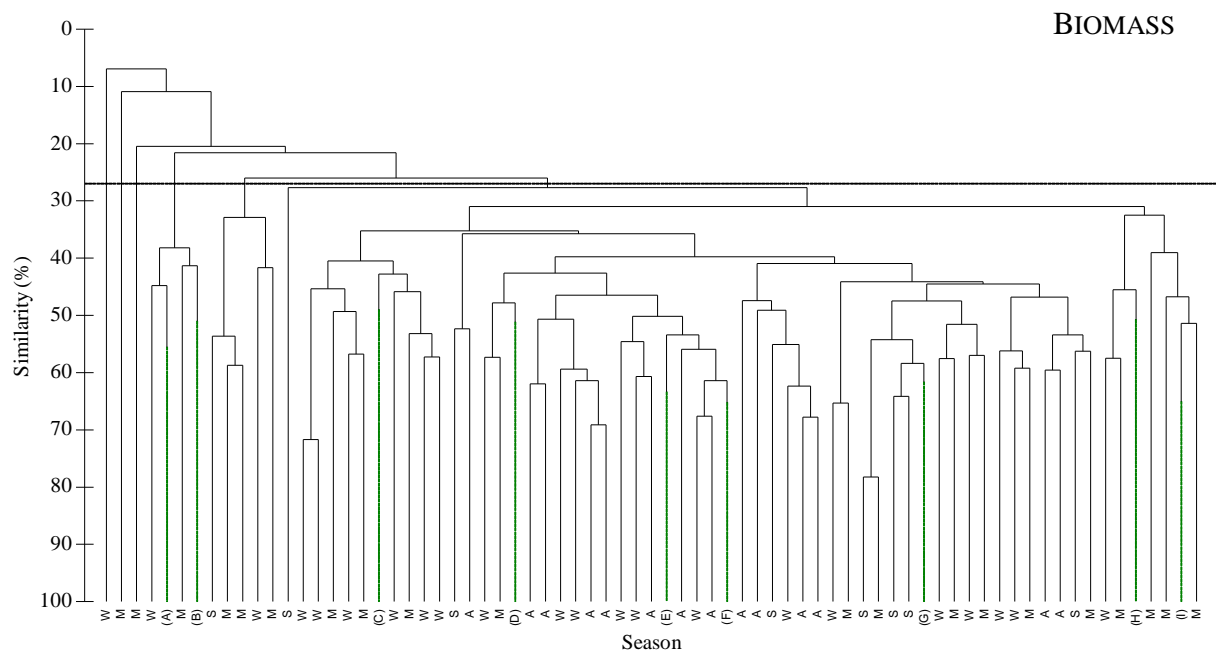
ANNEX VIII

- a) Dendrogram obtained by cluster analysis of the discarded species abundance and biomass for the **fish trawl** (92 tows) métier, by season (W-winter, S-spring, M-summer, A-autumn). Five abundance groups and six biomass groups are defined at similarity level of 27% (dashed line).
- a) MDS plot of the discarded species abundance and biomass for the fish trawl (92 tows) métier, by season (W-winter, S-spring, M-summer, A-autumn), with superimposed clusters at similarity levels of 27% (dashed line).
- b) MDS plot of the discarded species abundance and biomass for the crusfishtacean trawl (92 tows) métier, by season (W-winter, S-spring, M-summer, A-autumn), with superimposed mean depth values (continuous line). The area of the circles is proportional to the average depth of the tows.

a)

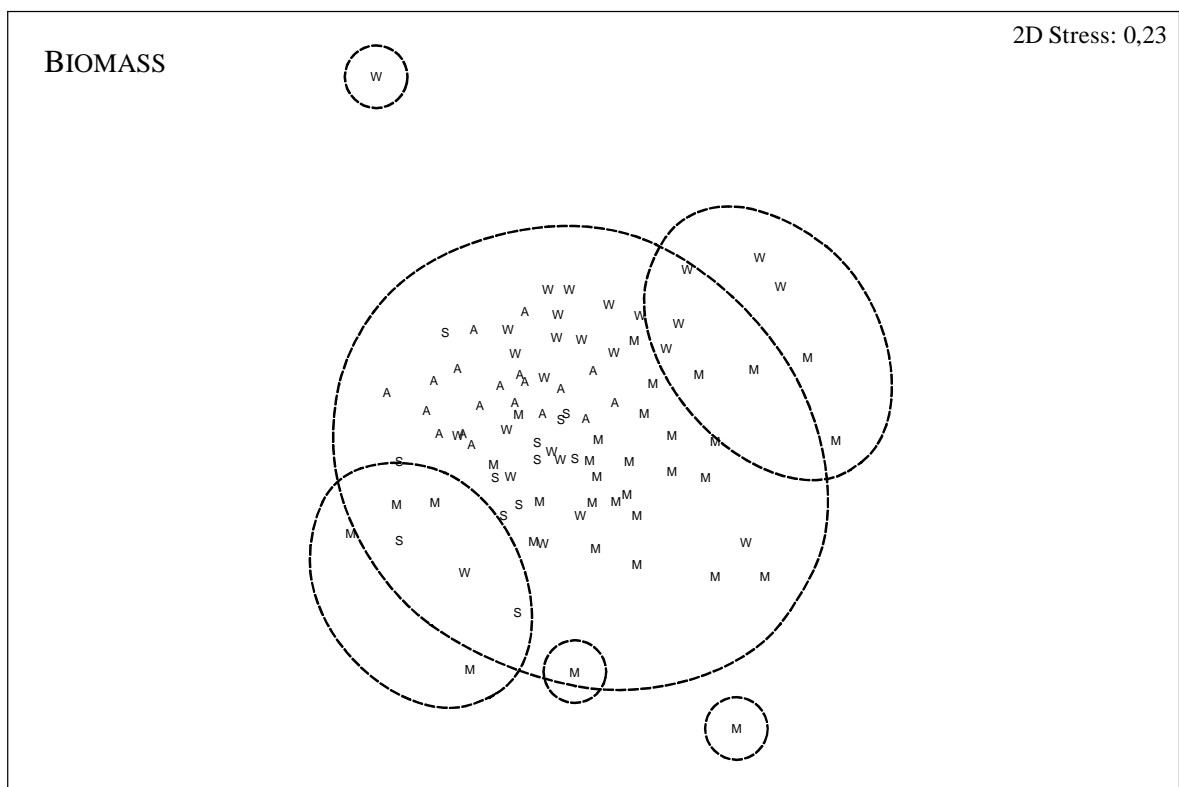
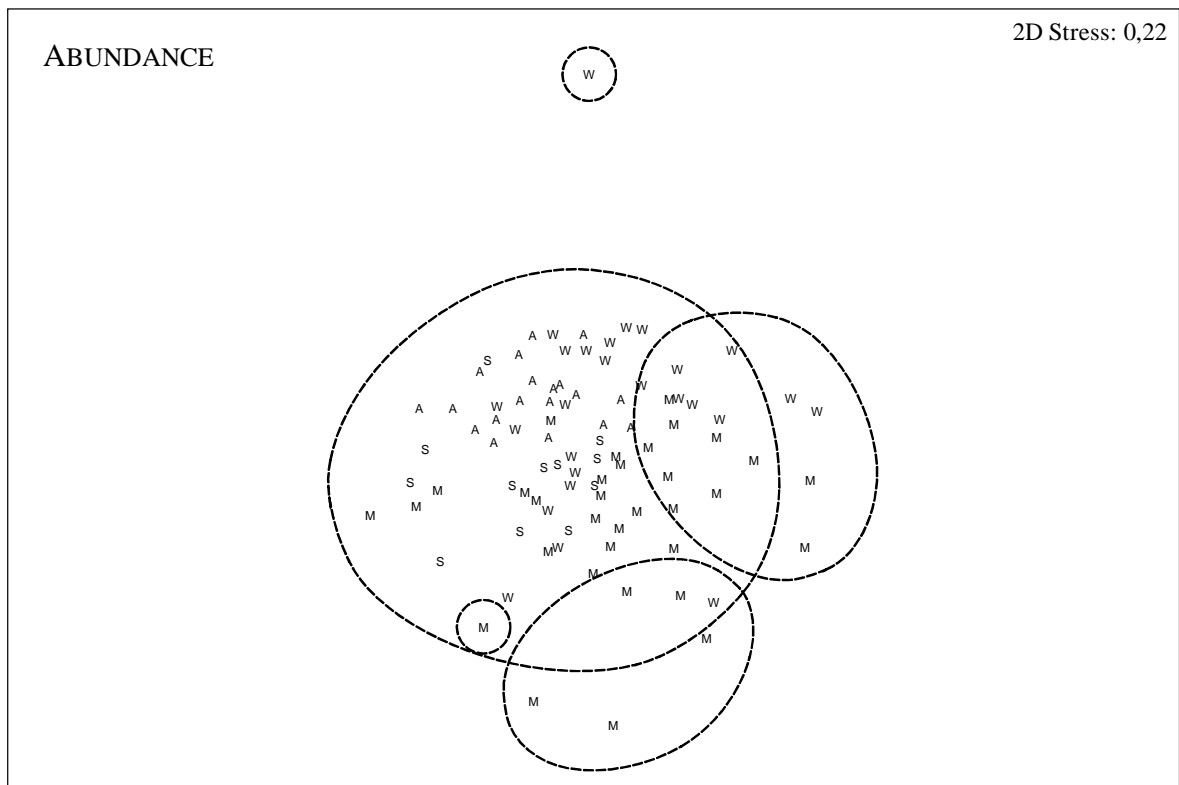


Legend: A, C, D: autumn (A); B, E: winter (W); F, G, H, K: Summer (M); I, J: Spring (S)



Legend: A, C: winter (W); B, D, H, I: summer (M); E, F: autumn (A); G, K: summer (M); J: spring (S)

b)



c)

