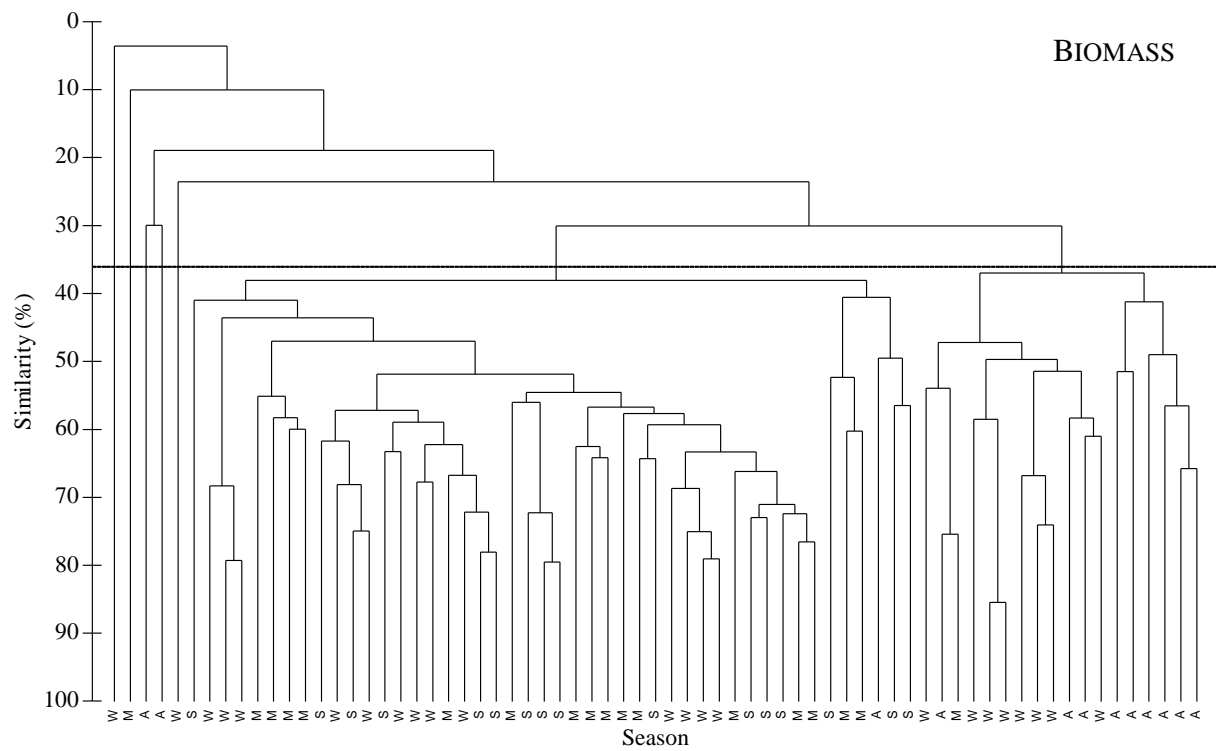
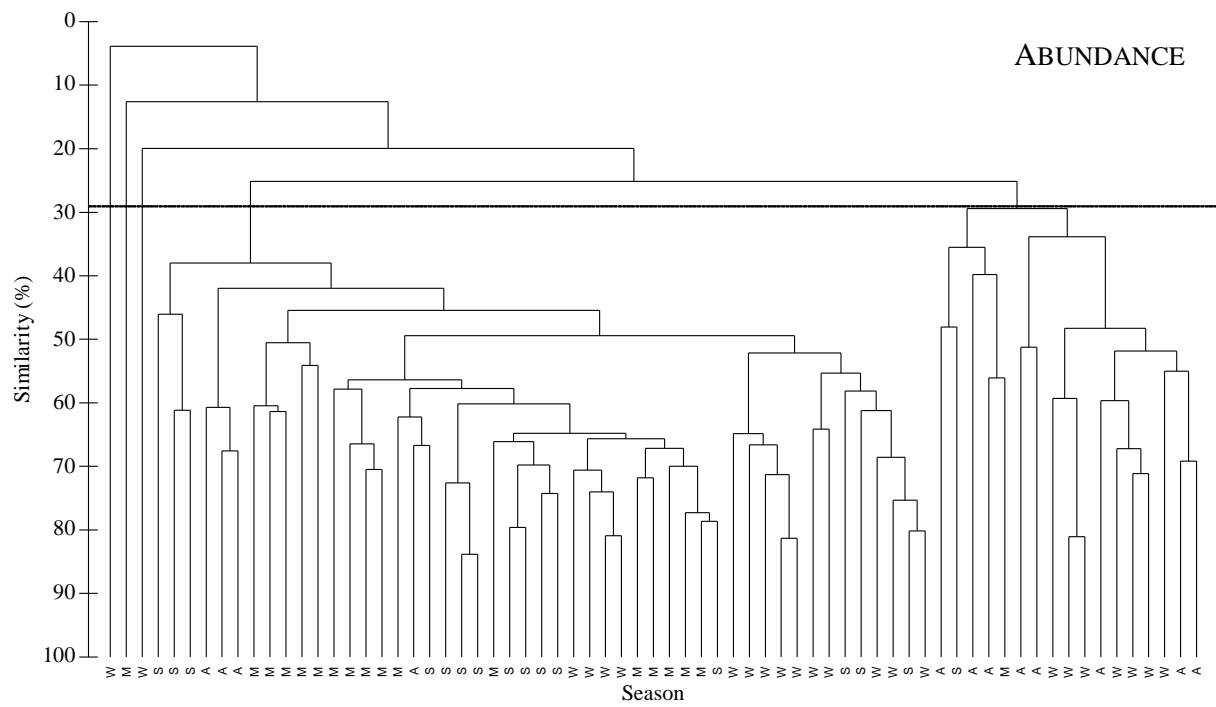


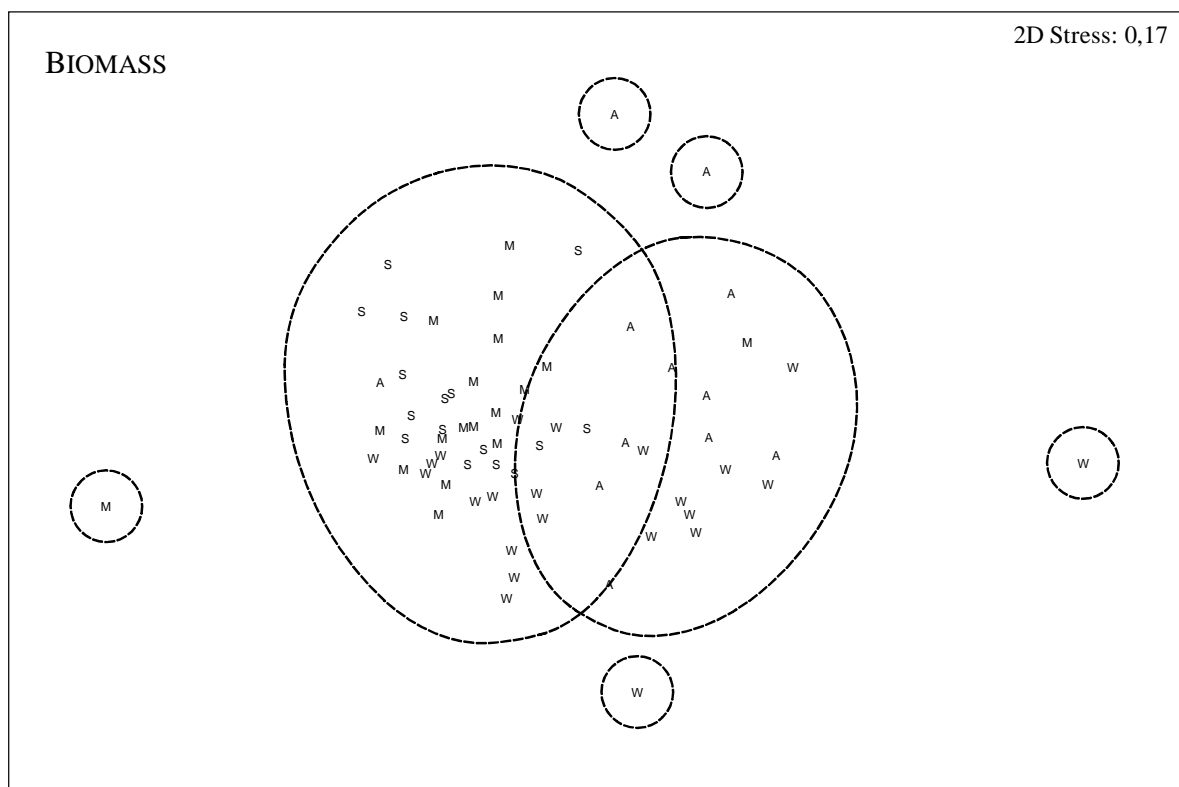
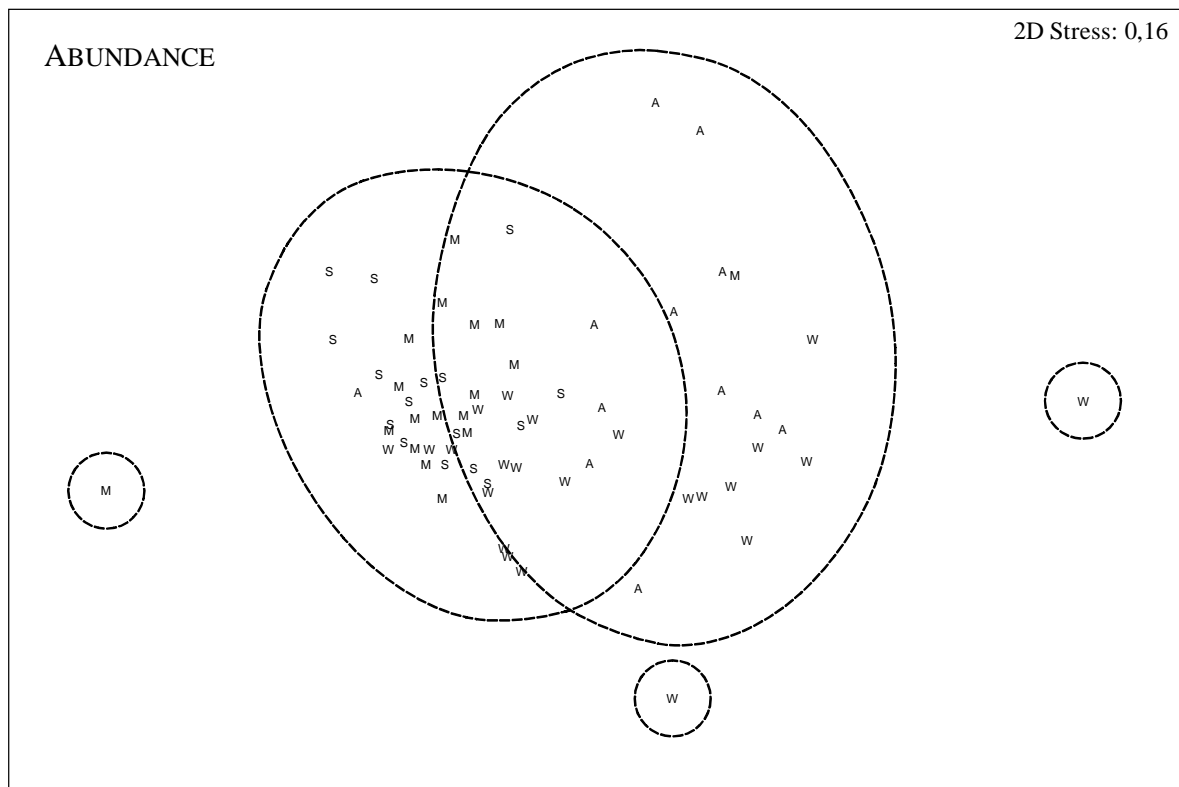
ANNEX VII

- a) Dendrogram obtained by cluster analysis of the discarded species abundance and biomass for the **crustacean trawl** (72 tows) métier, by season (W-winter, S-spring, M-summer, A-autumn). Five abundance groups are defined at similarity levels of 29% and seven biomass groups are defined at similarity levels of 36% (dashed line).
- b) MDS plot of the discarded species abundance and biomass for the crustacean trawl (72 tows) métier, by season (W-winter, S-spring, M-summer, A-autumn), with superimposed clusters at similarity levels of 29% for abundance data and 36% for biomass data (dashed line).
- a) MDS plot of the discarded species abundance and biomass for the crustacean trawl (72 tows) métier, by season (W-winter, S-spring, M-summer, A-autumn), with superimposed mean depth values (continuous line). The area of the circles is proportional to the average depth of the tows.

a)



b)



c)

